



# HABIBA

BACK TO THE ROOTS

AUTUMN/WINTER 2023



# BACK TO THE ROOTS

AUTUMN/WINTER 2023

**HABIBA** "my love"

BACK TO THE ROOTS - is featuring true craftsmanship, genuine fabrics, beautiful handwork and embroidery like our grandmothers made it.

We keep finding inspiration in traditional craftsmanship, beautiful patterns and special colour combinations.

For the latest story of HABIBA, the main colours are dark powder, pastel blue and warm rust. These colours are very nice in combination with our classic navy, japan blue and bright red, so the new collection is easy to combine with earlier collections.

CLEA is a new embroidery range in a quirky mix of sweet and crazy hand illustrations. Discover and make up your own story.

You will find some of our iconic motifs mixed with new illustrations. A lobster, an apple, oldschool things from the kitchen and livingroom and much more surprises.

HABIBA's collection still consists of fine striped patchwork kantha quilted bedspreads, cushion cases, quilted toiletry bags and make up clutches. You will also find hand illustrated svarves, small bandanas, computer sleeves with beautiful embroideries and colourful prints and spacious tote bags.

Since the beginning the range has developed and expanded with Habiba wear - a cosy story with a pyjamas, a long shirt, a strap dress and kimonos. The lately launched quilted jacket has already become a true classic HABIBA item. The short quilted jacket is inspired by the french classic workwear jacket with three functional pockets. In general we add pockets in all styles if possible, which makes them functional for modern women. There is also a cool waistcoat which we like to match with shirts and the jackets.

We have been very excited to introduce the new selection of homewear with a unique embroidered table cloth, napkins and tea- and coffee cozies in patchwork and embroidery.

Hope you feel like inviting all your friends for a cozy dinner at home creating your own HABIBA universe.

Love from

Katrine and Mette



# CLEA EMBROIDERY



## ORGANIC COTTON WITH EMBROIDERY

MAKE UP CLUTCH / MC-629



TILE

TOILETRY BAG / TB-629



PASTEL BLUE

COMPUTER SLEEVE 13" / CS-105



TILE



PASTEL BLUE

# CLEA EMBROIDERY

CUSHION 50X50 CM / PC-322



TILE



PASTEL BLUE

# ORGANIC COTTON WITH SLUBS

TABLE NAPKINS - 4 PCS SET / TN-101  
40x40 CM



TILE

TABLE CLOTH 140x250 CM / TC-101



PASTEL BLUE

TILE

# DOTTY SEERSUCKER

SHIRT, WAISTCOAT S/M - M/L  
PYJAMAS SET, JACKET S/M - M/L - L/XL

QUILTED JACKET / JQ-105



PASTEL BLUE

QUILTED WAISTCOAT / WQ-103



PASTEL BLUE

PYJAMAS SET / PY565



PASTEL BLUE

SHIRT / SH-565



PASTEL BLUE

# ORGANIC COTTON WITH PRINT AND PIPINGS

MAKE UP CLUTCH / MC-628



PASTEL BLUE

TOILETRY BAG / TB-628



PASTEL BLUE

COMPUTER SLEEVE / CS-106



PASTEL BLUE

CUSHION 50x50 CM / PC-323



PASTEL BLUE

# MUMU PATCHWORK



## ORGANIC COTTON POPLIN/PATCHWORK

TEA COZY / TE-102



RUST



PASTEL BLUE

COFFEE COZY / CO-102



RUST



PASTEL BLUE

# MUMU PATCHWORK

MAKE UP CLUTCH / MC-627



RUST



PASTEL BLUE

TOILETRY BAG / TB-626



RUST



PASTEL BLUE

TOTE BAG / TO-706



PASTEL BLUE

# ORGANIC COTTON POPLIN/PATCHWORK

HAND QUILTED BED COVER / BC-204



PASTEL BLUE

CUSHION 50x50 CM / PC-316



RUST

# ORGANIC COTTON

PATCHWORK

QUILTED JACKET S/M - M/L - L/XL

QUILTED JACKET / JQ-106



PASTEL BLUE



RUST





# ORGANIC COTTON

## YARDYED STRIPE

QUILTED JACKET / JQ-108



QUILTED WAISTCOAT / WQ-104



GENTLEMAN  
STRIPE

CLASSIC SHIRT / SH-101



LONG SHIRT / SH-566



PANTS / PA-101



PASTEL BLUE



## THINGS TO KNOW ABOUT OUR QUALITIES AND PRODUCTS

### **SATIN**

#### **100% ORGANIC COTTON**

Satin is an old-fashioned weaving method used for luxury fabrics. Throughout the ages, satin weaves have been used for luxury fabrics in primarily silk and cotton for use in clothing and bed linen. The weaving method involves skipping 3 threads which creates a shiny appearance on the fabric's surface. Satin weave makes the fabric, whether cotton, viscose, or silk, more breathable, soft and comfortable. We love the beautiful weave because we think the shiny appearance accentuates our prints.

### **VELOUR**

#### **100% ORGANIC COTTON**

Velour is a weave that feels velvety on the surface. Velvet and velour are closely related, as they are both a general term for several textiles. These textiles are woven, and all have a short upright layer of hair - which is called a pile. This pile can have many different types of appearance. Velour is used for both furniture and clothing. Velour is usually woven in cotton or silk - but can also be woven in wool and other qualities.

At Habiba, we like to use velour because it is soft, feels "warm" and makes our prints very special when they are embossed on the soft, thick fabric. We use velour in 100% organic cotton.

### **POPLIN**

#### **100% ORGANIC COTTON**

Poplin is a commonly used weaving method for shirt fabrics. The weave is simple and tight, with weft and warp thread going over and under each other. It gives a smooth and very uniform surface. Poplin is a tightly woven fabric.

At Habiba, we like to use poplin for our patchwork products because we think it gives a beautiful and simple look - it reminds us of the vintage quilts we have been collecting privately for decades.

### **KAPOK**

#### **100% ORGANIC, ALLERGY FRIENDLY AND ALMOST CO2 NEUTRAL**

Kapok is organic, sustainable, and hypoallergenic.

Kapok grows in seed pods on giant trees that can grow up to 70 meters tall and carry more than 3000 pods. The seed pods contain kapok, which are natural fibers of seed hairs. Kapok is the lightest natural fiber in the world, approx. 6 times lighter than cotton. The light fibers make kapok feel silky which is why the kapok tree is also called the "Silk Cotton Tree". When using kapok, the environmental impact is minimal. All processing and production are done manually and there are no waste products. CO2 emissions occur only when the kapok is transported.

### **RECYCLED FILLING**

#### **100% A GOOD IDEA**

Our recycled filling is made from fibers from recycled textiles that have been ripped and shredded into a kind of "cotton wool".

We use the recycled filling for our quilts, which makes them feel like a beautiful "old-fashioned quilt". This is not entirely surprising because this kind of filling was used in quilts in the old days – as well as in upholstery and much more.

Today, however, the process is much more sophisticated, and this type of filling is first sorted by quality and colour and then ripped into "cotton wool".

### **HAND QUILT**

#### **100% AN AMAZING WORK**

All Habiba throws are hand quilted. Whether it's a quilt with a printed pattern, a bedspread, or a patchwork throw - it's quilted by hand. In other words, all of the seams in the fabric and the filling are hand stitched.

Quilting is a hugely time-consuming job. It has a long history and is currently enjoying a period of renaissance as it once again re-establishes itself across cultures and geographies. We are inspired by the old Indian quilting techniques in particular.

### **PATCHWORK**

#### **100% A HUGE PIECE OF WORK**

We love patchwork. It's been a passion of ours ever since our mothers sewed vests and blankets for us in the 70s in all sorts of fabric remnants.

We love the creative process of putting together colors and sizes of the different "patches" - whether it is cubes or stripes. It's so much fun and a huge pleasure when blankets and bags are in patchwork – and then subsequently quilted. The quilt on top of the patchwork is like the icing on the cake and gives the feeling of an old American vintage quilt that we like so much. Patchwork is a complicated and time-consuming job. It must be measured, cut, adjusted, and sewn extremely precisely so that the pieces fit together.

## SALES AGENTS

### **DENMARK / EAST**

ASUI Agency

Line Wieben  
lw@asuiagency.com  
phone: +45 31310612

#### **Showroom:**

Hellerupvej 41  
2900 Hellerup

### **DENMARK / WEST**

Mikkelsen & co / Luise Mikkelsen  
mikkelsenogco@mail.dk  
phone: +45 20890348

### **NORWAY**

ChaKra Agenturer / Charlotte Kragerud  
charlotte@chakra-agenturer.no  
phone: +47 90608295

### **BELGIUM NETHERLANDS & FRANCE:**

Hanne Juul Agency / hanne@hannejuulagency.com  
phone: +32 477 97 28 92/ www.hannejuulagency.com

#### **Showroom:**

Trademart  
Atomiumsquare 1  
Dunkerque 263  
1020 Brussels  
Belgium

### **INTERNATIONAL SALES**

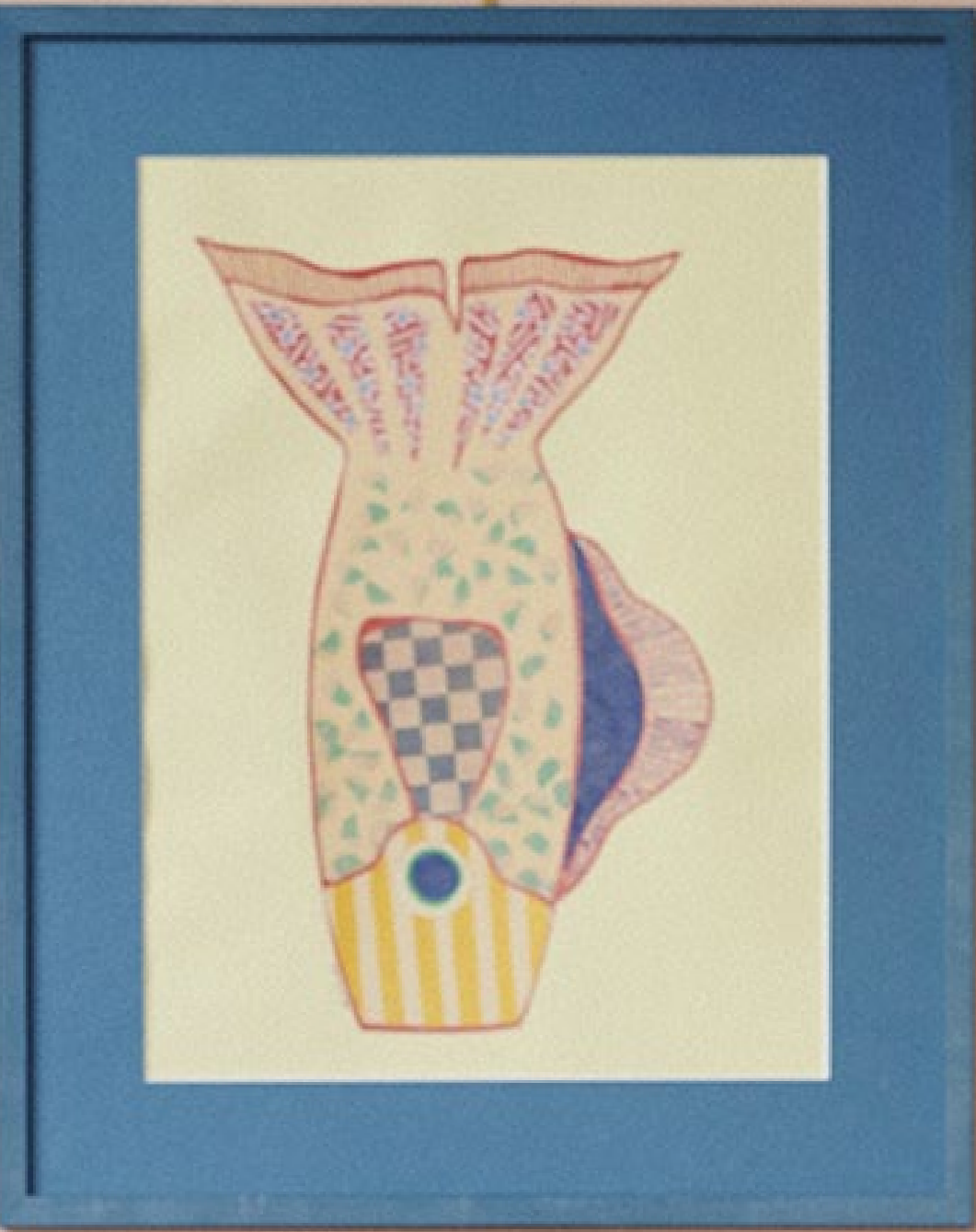
**HABIBA** head office  
info@habiba.dk

### **IMAGE BANK**

**habiba.dk/pages/imagebank**  
Password: HABIBA-PACKS

### **FIND US HERE:**

www.habiba.dk  
Instagram: habiba\_salon  
Facebook: habibasalon



Photographer  
Kamilla Bryndum

